



Years in Service



GEOTECHNICS PHILIPPINES INC.

Pioneering Geotechnical Engineering Company in the Philippines

COMPANY PROFILE



DPWH-BRS
Accredited



National Water
Resources Board (NWRB)



Council of Engineering
Consultant of the Philippines



Philippine
Construction Association



Philippine Council
Accreditation Bureau-DTI

BRIEF HISTORY

GEOTECHNICS PHILIPPINES, INCORPORATED, was founded and organized on October 4, 1966 and registered with the Securities and Exchange Commission on October 18 of the same year. It is composed of a group of professionals, each respected in their own fields of endeavor. Its preliminary goal was to provide geotechnical consulting services and carry a general contracting business in all kinds of construction, mining, manufacturing and infrastructure activities.

With the purpose of providing technological assistance to the ever-increasing needs of the industrialization of the country, the company has expanded its services in Geotechnical Engineering and it has gained the stature as one of the leading corporations in its field. From a meager capital of Php250,000.00, it is now operating on a capital base of Php50,000,000.00.

ACCREDITATION AND MEMBERSHIP

- Philippine Constructors Association (PCA member)
- PCAB - General Engineering B CIAP - Dept. of Trade and Industry (DTI)
- Accredited testing laboratory - Bureau of Research and Standard (DPWH)
- Accredited Driller - National Water Resources Board (NWRB)
- Council of Engineering Consultants of the Philippines – (CECOPHIL)-Member

VISION STATEMENT

To meet global standards and provide technological innovation for premium value geotechnical services and reliable results. Maintain the safety/quality requirements and continuous recognition.

MISSION STATEMENT

To provide cost effective solutions, safe and timely delivery of service for the satisfaction and needs of the Client.

POLICY ON QUALITY

The management and staff of **GEOTECHNICS PHILIPPINES, INC. (GPI)** is committed to satisfy customer satisfaction of packaging accurate test reports with an assured level of quality and on time delivery of services.

By virtue of accreditation to the quality system based on the requirements of the International Standard (ISO/IEC 17025) – General requirements for the competence of calibration and testing laboratories, the following shall be complied:

- The quality and reliability of our reports
- A philosophy of continuous improvement will be adopted by all employees so that the Quality system will be a continuously evolving program.
- Education and training of all employees are purposively to understand company policy will be achieved through induction and structured training programs.

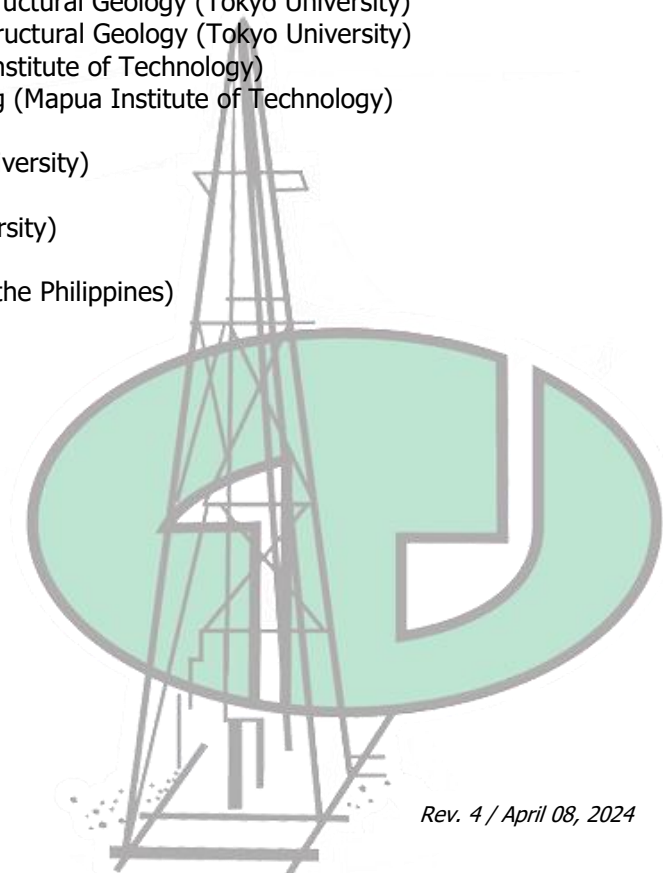
The attainment of these quality goals requires strong and responsive management and a concerted effort of all employees.

CORPORATE DIRECTORS

Ricardo A. Tabujara III	-	Chairman of the Board
Diosdado A. Ureña	-	President
Marc Arthur Z. Go	-	Vice President
Alexis A. Acacio	-	Secretary – Treasurer
Virgilio Santos	-	Director
Aida Chinloy	-	Director
Francis Cruz	-	Director
Miguel Reyes	-	Director

PERMANENT CONSULTING & OPERATING OFFICERS

Salvador F. Reyes	-	M.S. PhD Soil & Rock Mechanics (University of Illinois) B.S.C.E (University of the Philippines) Certificate in Highway Traffic (Yale University)
Benjamin R. Buensuceso	-	PhD. Geotechnical Engineering (Asian Institute of Technology) M.S. Geotechnical Engineering (Asian Institute of Technology) B.S.C.E. (University of the Philippines)
Alexis A. Acacio	-	PhD. Geotechnical Engineering (University of Tokyo) M.S. Geotechnical Engineering (University of Tokyo) B.S. C.E. (University of the Philippines)
Brian B. Tan	-	M.S. Civil Engineering (Massachusetts Institute of Technology) B.S. C.E. (University of the Philippines)
Roy Anthony C. Luna	-	M.S.C.E. (University of the Philippines) B.S. C.E. (University of the Philippines)
Michael Paolo V. Follosco	-	M.S.C.E. (University of the Philippines) B.S.C.E. (University of the Philippines)
Bernardo Barcelona	-	Doctor of Science in Structural Geology (Tokyo University) Master of Science in Structural Geology (Tokyo University) B.S. Geology (Mapua Institute of Technology) B.S. Mining Engineering (Mapua Institute of Technology)
Diosdado A. Ureña	-	B.S. C.E. (Adamson University)
Elmer Z. Valencia	-	B.S.C.E. (Siliman University)
Marc Arthur Z. Go	-	B.S.C.E. (University of the Philippines)



DEPARTMENT PERSONNELS

EVALUATION DEPARTMENT

Marc Arthur Z. Go	-	Team Head (Civil Engineer)
Micah Angela P. Dizon	-	Civil Engineer
Athena Bernice J. Lim	-	Civil Engineer
Reuel S. Corsino Jr	-	Civil Engineer
Carl Louis De Guzman	-	Civil Engineer
Joslyn Mei Asuncion	-	Civil Engineer
Ben Joshua Landicho	-	Civil Engineer
Ma. Rosella B. Mantal	-	Civil Engineer

PILE TESTING DEPARTMENT

Carmina C. Radoc	-	Pile Testing Manager
Marc Gerard Mundin	-	Civil Engineer
Elton Jayk Victorero	-	Civil Engineer
Christian Rellama	-	Civil Engineer
Christian Guimbaolibot	-	Civil Engineer
Krizzia Lei Molano	-	Civil Engineer
Brix Bazar	-	Field Technician
Mark Franco	-	Field Technician
Allan Barrios	-	Field Technician
Nikkimar Ramos	-	Field Technician
Carolyn Arcilla	-	Document Controller

RESEARCH AND DEVELOPMENT DEPARTMENT

Mark George Nicolas II C. Radoc	-	Civil Engineer (Special Test Engineer)
Reuel S. Corsino Jr	-	PS Logging Test
Ryan G. Fernandez	-	CPT Technician
Joven Abad	-	Field Technician

FIELD DEPARTMENT

Ian Jeffrey Silvestre	-	Civil Engineer
Emerson Ureña	-	Civil Engineer
Ricky Cariquez	-	Geologist
Jomarie B. Togano	-	Geologist
Allan Jovellano	-	Geologist
Allen Marvin Yutuc	-	Geologist
Jaira D. Morales	-	Geologist
Rhene Ablaza	-	Project Officer In-Charge
Jonard Labastida	-	Project Officer In-Charge

QUALITY DEPARTMENT

Ma. Alicia B. Atoy	-	Quality Manager
Micah Angela P. Dizon	-	Assistant Quality Manager
Mervin M. Agsuay	-	Quality Assurance
Romelyn Tamon	-	Quality Assurance
Alisandra D. Morales	-	Quality Assurance/Geologist
Lady Eimeren Bazar	-	Lead Document Controller
Romalyn Baldonaza	-	Document Controller

LABORATORY DEPARTMENT

Marco Dela Cruz

Alexander Andal
Roberto Morelos
Paquito Bartolome
Angelito J. Gutierrez
Ronnie A. Diño
Jeffrey U. Bonita
Joven Abad
Johnard Cabarles
Bryan Del Rio
Gerome Cobilla
Paul Magbago
Robert Gonzalo
Jimmy Acedera

- Laboratory Manager (Civil Engineer)
- Laboratory Engineer
- Senior Laboratory Technician
- Senior Laboratory Technician
- Laboratory Technician
- Laboratory Technician
- Laboratory/Field Technician
- Laboratory/Field Technician
- Laboratory/Field Technician
- Laboratory Aide
- Laboratory Aide
- Laboratory Aide
- Laboratory Aide
- Laboratory Aide

PROCESSING DEPARTMENT

Elizabeth G. Mercado

Raymond B. Jacinto
Gemma Nuqui
Sherelyn Laban
Jaybee Samillano
Mheriel Gacho
Edrian Capariño

- Processing Manager
- Senior Encoder
- Senior Encoder
- Encoder
- Encoder
- Encoder
- Encoder

ADMINISTRATIVE DEPARTMENT

Katrina Mancera
Zarah Rose Nicolas
Thess Melgar
Marites Masajo
Sarah Mae Juan
Benjo Severino
Mark Gaddi

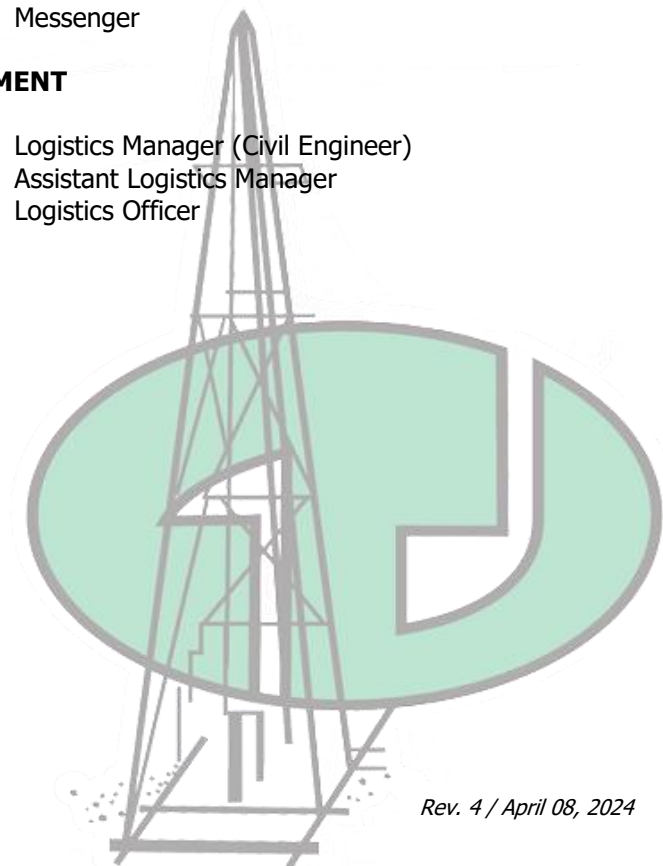
- Assistant Accounting Manager
- Executive Secretary
- Billing Officer
- Human Resources Head/Project Accountant
- Accounting Clerk
- Document Controller/Information Technology
- Messenger

LOGISTICS DEPARTMENT

John Paul Dela Cruz

Saldy Nicolas
Ryan De Jesus

- Logistics Manager (Civil Engineer)
- Assistant Logistics Manager
- Logistics Officer



SERVICES OFFERED

GEOTECHNICAL INVESTIGATION AND SUB-SURFACE EXPLORATION

DRILLING



Onshore



Offshore

Field Testing and Procedure:

- Standard Penetration Tests and Split-Barrel Sampling of Soils
- Thin-Walled Tube Sampling
- Diamond Core Drilling
- Auger Boring
- Piston Sampling
- Mazier Sampling
- Pitcher Sampling
- Thick-Walled Tube Sampling

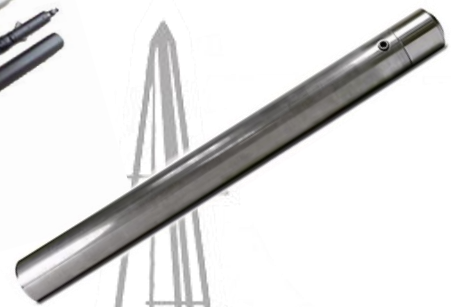
SAMPLER TYPES



SPT Split-spoon Sampler



Core Barrel



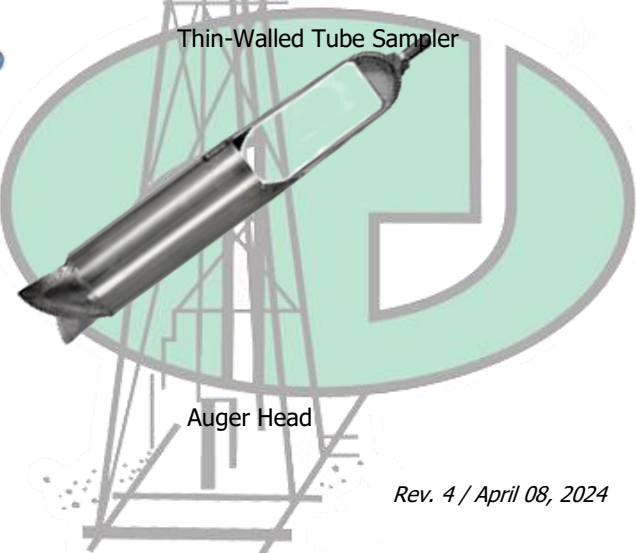
Thin-Walled Tube Sampler



Pitcher Sampler



Mazier Sampler



Auger Head

Equipment



LONG YEAR 44



CRAWLER 3



TOHO 4



KOKEN OP



GY-150



CRAWLER 4



TONE TBM

LIST OF DRILLING RIG & PUMPS

Equipment Name	Type / Brand	Size	Maximum Depth of Penetration (m)	Qty
DRILLING RIG				
Bundok Drilling	Hydraulic Feed	Big	50~300	1-unit
Christensen	Hydraulic Feed	Big	50~300	1-unit
Crawler 1, 2, 3 & 4	Hydraulic Feed	Big	50~300	4-units
Long Year 38 & 44	Hydraulic Feed	Big	50~300	2-units
Tone TGM	Hydraulic Feed	Big	50~300	1-unit
Tone TBM 1 & 2	Hydraulic Feed	Big	50~300	2-units
Tone Rig	Hydraulic Feed	Medium	30~50	3-units
Hydraulic Sander	Hydraulic Feed	Medium	30~50	4-units
KOKEN RK 1 & 2	Hydraulic Feed	Big	50~300	2-units
GY - 150	Hydraulic Feed	Medium	45~230	1-unit
Bell Machine 1 & 2	Hydraulic Feed	Medium	30~50	2-units
Tone THS 5-1 & 5-2	Hydraulic Feed	Medium	30~50	2-units
Tone FFC	Hydraulic Feed	Medium	30~50	1-unit
Toho Rig	Hydraulic Feed	Medium	30~50	14-units
YBM Rig	Hydraulic Feed	Medium	30~50	7-units
KOKEN OP 2, 3, 4 & 5	Hydraulic Feed	Medium	30~50	4-units
KSK OP 2	Hydraulic Feed	Medium	30~50	1-unit
KSK small 1, 2 & 3	Hydraulic Feed	Small	20~30	3-units
Sander 2, 3, 4, 5 & 6	Hydraulic Feed	Small	15~30	5-units
Acker Ace	Hydraulic Feed	Small	30~50	1-unit
XTPM Drilling Rig	Hydraulic Feed	Medium	30~50	1-unit
Sander 1	Manual Feed	Small	10~25	1-unit
			Total	70-units

SOILS AND MATERIALS TESTING

LABORATORY TESTS



Texture, Plasticity & Density Characteristics

- Laboratory Determination of Water Content of Soil and Rock
- Liquid Limit, Plastic Limit and Plasticity Index of Soils (Atterberg Limit)
- Particle-Size Distribution (Gradation) of Soils using Sieve Analysis
- Particle-Size Distribution (Gradation) of Fine-Grained Soils using the Sedimentation (Hydrometer) Analysis
- Specific Gravity of Soils
- Shrinkage Factors of Soils by Mercury Method
- Unit Weight of Soils
- Laboratory Compaction Characteristics of Soils using Standard Effort [12,400 ft-lb/ft (600 kN-m/m)]
- Laboratory Compaction characteristics of Soil using Modified Effort [56,000 ft-lb/ft (2,700 kN-m/m)]
- Moisture, Ash and Organic Matter of Peat and Other Organic Soils
- California Bearing Ration (CBR) of Laboratory - Compacted Soils
- Minimum and Maximum Index Density / Unit Weight of Soils

Mechanical Properties

- Laboratory Miniature Vane Shear test for Saturated Fine-grained Clayey Soil
- Unconfined Compressive Strength of Cohesive Soils
- Direct Shear Test of Soils under Consolidated Drained Conditions
- One Dimensional Consolidation properties of soils
- Unconsolidated Undrained Compressive Strength of Cohesive Soils in Triaxial Compression
- Consolidated Undrained Triaxial Compression Test on Cohesive Soils
- Consolidated Drained Triaxial Compression on Cohesive Soils

Hydrologic Properties

- Permeability of Granular Soils-Constant Head Method
- Permeability of fine-grained Soils- Falling Head Method
- Pinhole Dispersion Test

Rock Deformation and Strength

- Slake Durability of Shale and Similar Weak Rock
- Splitting Tensile Strength of Intact Rock Core Specimen
- Unconfined Compressive Strength of Intact Rock Core Specimen
- Point Load Strength Index of Rock
- Direct Shear Test
- Compressive Strength and Elastic Moduli of Intact Rock Core Specimen
 - Method A: Triaxial Compressive Strength of Undrained Rock Core Specimens without Pore Pressure measurements
 - Method C: Uniaxial Compressive Strength of Intact Rock Core Specimen

Aggregates

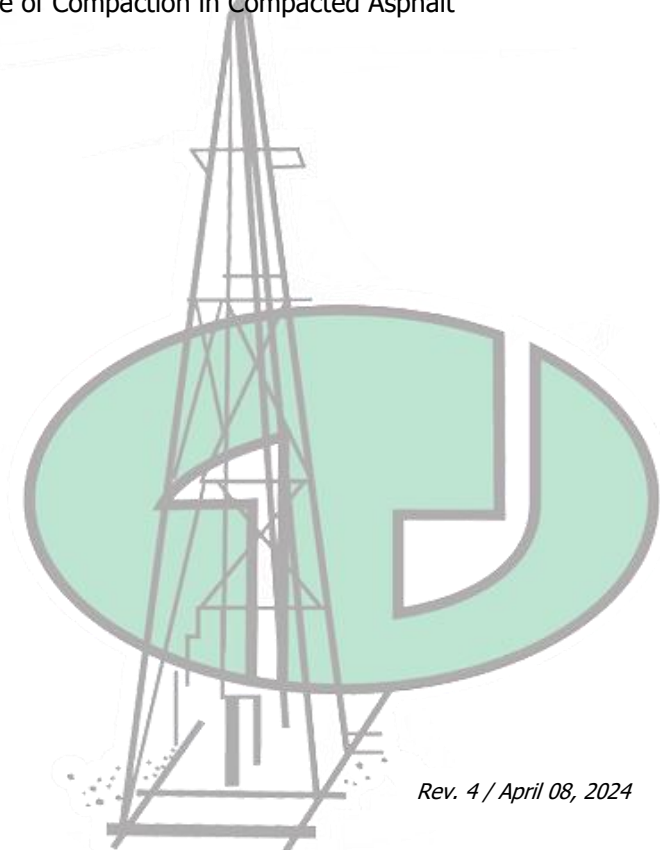
- Specific gravity and Absorption of Fine Aggregates
- Specific gravity and Absorption of Coarse Aggregates
- Clay Lumps and Friable Particles in Aggregates
- Organic Impurities of Fine Aggregates
- Resistance to Degradation of Small-size coarse aggregates by Abrasion and Impact in the Los Angeles Machine
- Resistance to Degradation of Large-size Coarse Aggregates by Abrasion and Impact in the Los Angeles Machine
- Total Moisture Content of Aggregate by Drying
- Material Finer than 0.75mm (No. 200) sieve in mineral aggregates by washing
- Sieve Analysis of Fine & Coarse Aggregates
- Soundness of Aggregates by use of Sodium Sulfate or Magnesium Sulfate
- Surface Moisture Content in Fine Aggregates
- Unit Weight and Voids in Aggregate
- Lightweight pieces in aggregates
- Emerson Aggregate Test
- Resistance of Fine Aggregate to Degradation by Abrasion in the Micro – Deval Apparatus

Concrete Mixtures

- Slump of Portland Cement Concrete
- Making and Curing Concrete Test Specimen
- Capping Cylindrical Concrete Specimen
- Compressive Strength of Beam Concrete Specimen
- Flexural Strength of Beam Concrete Specimen using third point loading
- Specific Gravity and Adsorption and Voids in Hardened Concrete
- Obtaining and Testing Drilled Cores

Asphalt Tests

- Quantitative Extraction of Asphalt Binder from Asphalt Mixture
- Bituminous Mix Testing
- Resistance to Plastic Flow of Bituminous Mixtures using Marshall Apparatus
- Resistance of Compacted Asphalt to Moisture Induced Damage
- Theoretical Maximum Specific Gravity and Density of Bituminous Paving Mixtures
- Bulk Specific Gravity and Density of Non-Absorptive Bituminous Paving Mixtures
- Percent Air Voids in Compacted Asphalt Mixtures; Degree of Compaction in Compacted Asphalt Mixtures

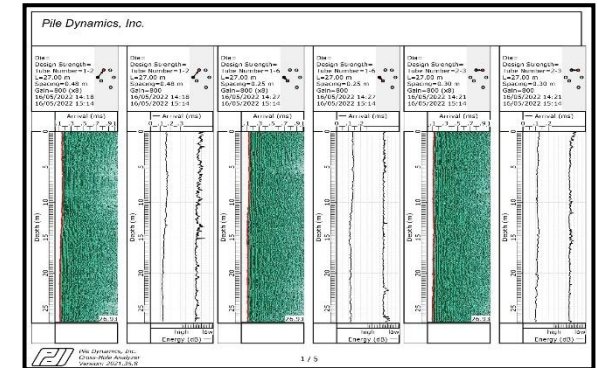


LABORATORY INVENTORY

JMC LABORATORY LIST OF APPARATUS/EQUIPMENTS				
INTENDED LABORATORY TEST	APPARATUS/EQUIPMENT	BRAND	QUANTITY (UNITS)	TOTAL AVAILABLE (UNITS)
CONSOLIDATION TEST	OEDOMETER	ELE & WYKEHAM FARRANCE	27	46
		RC	19	
TRIAXIAL TEST	TRIAXIAL APPARATUS (SOILS)	RC - MANUAL	3	9
		WYKEHAM FARRANCE - MANUAL	1	
		VJ TECH - AUTOMATED	3	
		CONTROLS - AUTOMATED	1	
	TRIAXIAL APPARATUS (ROCK) HOEK CELL	CONTROLS	1	
DIRECT SHEAR TEST	SHEAR BOX APPARATUS (SOILS)	WYKEHAM FARRANCE	1	4
		INDIA	1	
		RC	1	
	DIRECT SHEAR (ROCK)	INDIA	1	
LABORATORY VANE SHEAR	LABORATORY VANE SHEAR APPARATUS	WYKEHAM FARRANCE	1	2
		RC	1	
PERMEABILITY	CONSTANT HEAD/ FALLING HEAD	WYKEHAM FARRANCE	1	2
	CONSTANT HEAD/ FALLING HEAD	RC	1	
PINHOLE TEST	PINHOLE APPARATUS	CONTROLS	1	1
ROUTINARY TESTS	DRYING OVEN	BINDER	2	7
		RC	2	
		TBT	1	
		LABTECH	2	
	ELECTRONIC BALANCE	RC	2	6
		SANFORD	1	
		ASUKI	1	
		CONTROLS	1	
		KERN	1	
SIEVE ANALYSIS	SET OF SIEVES	WS TYLER	3	5
		GHOSH INDIA	2	
ORGANIC CONTENT TEST	MUFFLE FURNACE	CONTROLS	1	1
ORGANIC IMPURITIES	COLOR GLASS SCALE	GILSON	1	1
POINT LOAD TEST	POINT LOAD APPARATUS	RC	1	2
		ELE	1	
COMPRESSIVE STRENGTH	COMPRESSIVE MACHINE (CONCRETE/ROCKS)	CONTROLS	2	3
		WYKEHAM FARRANCE	1	
ABRASION	LOS ABRASION MACHINE (COARSE AGGREGATES)	CONTROLS	1	2
	MICRO DEVAL (FINE AGGREGATES)	RC	1	
SLAKE DURABILITY	SLAKE DURABILITY APPARATUS	JAPAN	1	1
ASPHALT TESTING	CENTRIFUGE EXTRACTOR	NL SCIENTIFIC	1	1
	MARSHALL COMPACTION AND MARSHALL HAMMER	FABRICATED IN ACCORDANCE TO SPECS	1	1
	THEORETICAL MAXIMUM SPECIFIC GRAVITY OF ASPHALT PYCNOMETER AND VACUUM SET	RC	1	1
	MARSHALL STABILITY AND FLOW	NL SCIENTIFIC	1	1
FLAT AND ELONGATED PARTICLES IN AGGREGATE	PROPORTIONAL CALIPER	CONTROLS	1	1
PAVEMENT CORING	CORE DRILL WITH CORE BIT(3", 4", 6")	LOCAL	3	3
FIELD DENSITY TEST	SAND CONE APPARATUS	LOCAL	2	2
	NUCLEAR GAUGE DENSITY TEST	HUMBOLDT	1	
MINIMUM-MAXIMUM DENSITY	VIBRATING TABLE	INDIA	1	1

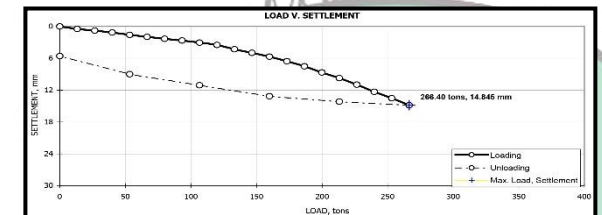
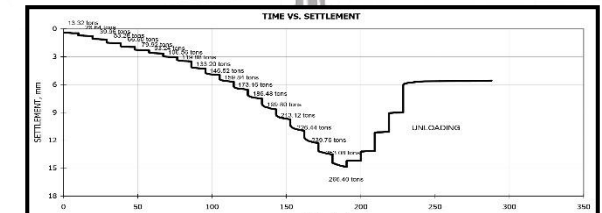
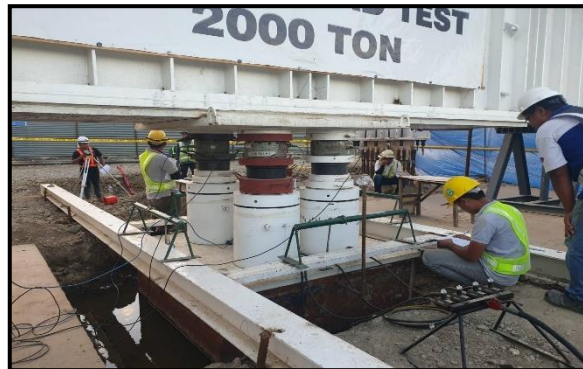
CROSSHOLE ANALYZER

- Reliable method for assessing the integrity of deep foundation elements such as newly placed concrete drilled shafts and slurry walls.



STATIC LOAD TEST

- Measures the response of a pile under a sustained load. This is one of the most direct methods of determining pile capacities.



SPECIAL TEST

SEISMIC REFRACTION SURVEY

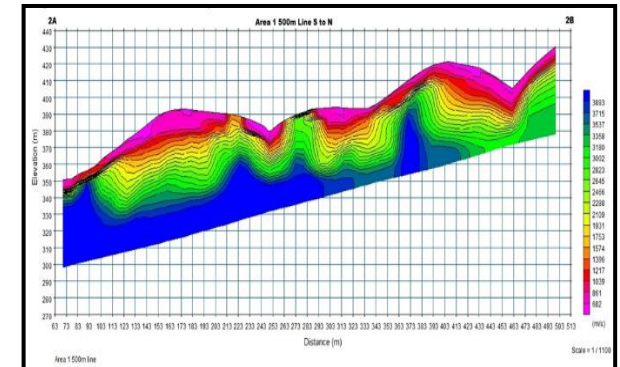
Application

- Obtains the seismic velocity profile of the ground. Data can be utilized to predict the depth of bedrock, rock strength/rippability, and layer thicknesses.

Apparatus

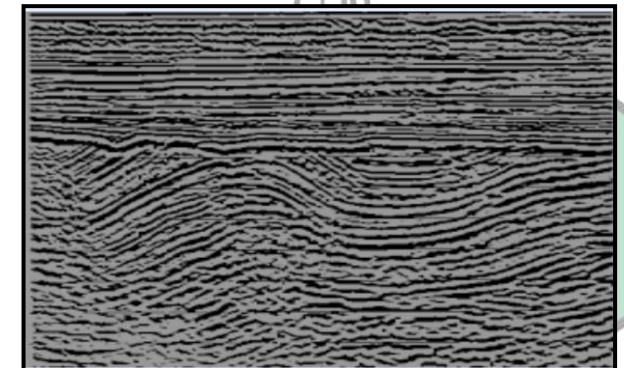


Processed Results



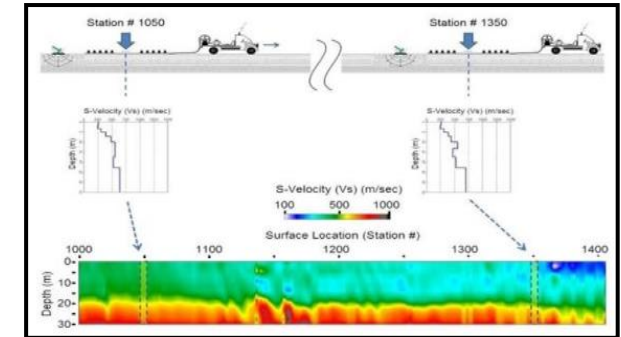
SEISMIC REFLECTION SURVEY

- Used for mapping layer thicknesses, bedrock levels, topography, horizontal profiling, voids and sinkholes, faults and horizontal fracture zones. It is particularly useful where high detail is necessary or in complex geological environments



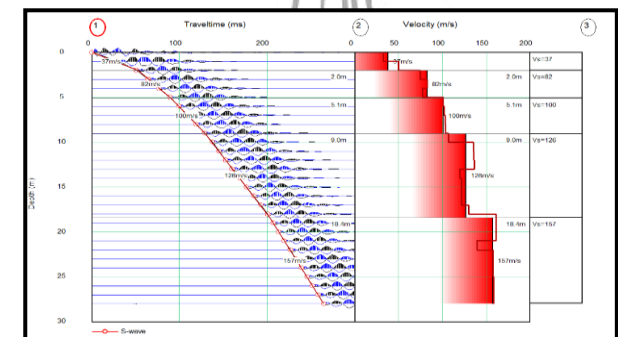
MASW (Multichannel Analysis of Surface Waves)

- Measures the surface shear wave velocities that travel through the ground. The processed data can be used to estimate the thickness of overburden and bedrock and evaluate ground stiffness. The test can be conducted for onshore and offshore investigations.



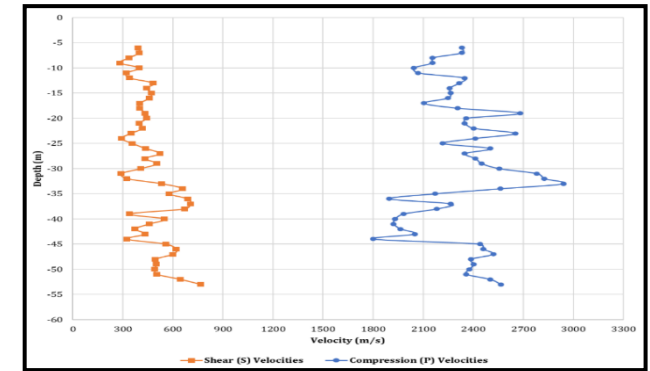
CROSSHOLE SEISMIC

- Establishes the seismic velocity profile of the ground which can be used to estimate the dynamic properties of soil and rock.



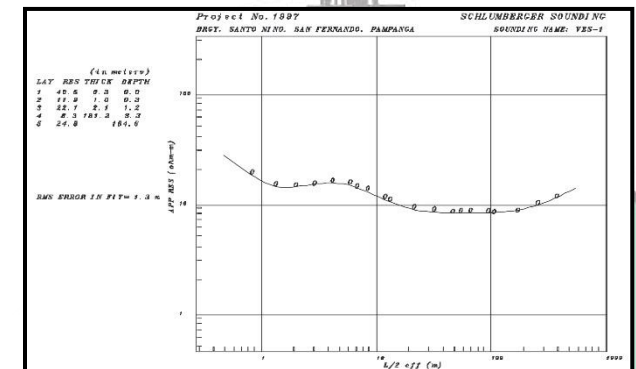
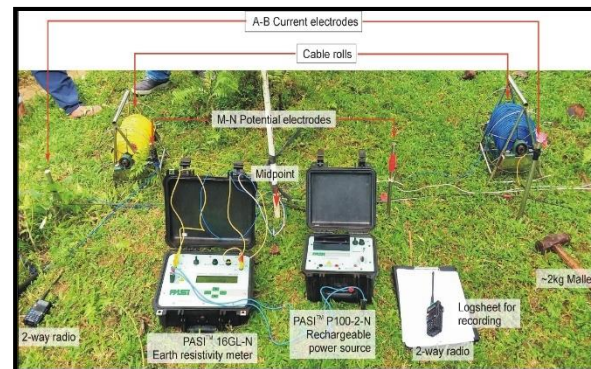
P-S LOGGING

- Measures compression and shear wave velocity profiles using indirect excitation.



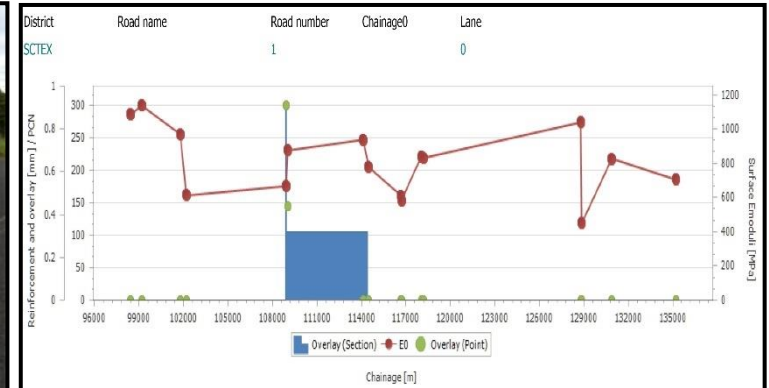
GEO-RESISTIVITY TEST

- Involves electrical measurements carried out on the ground surface to determine the depth and thickness of the underlying resistivity layers.
- Used to characterize possible lithologies and materials on site.



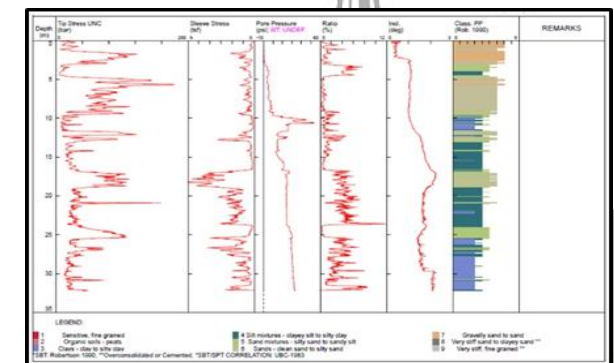
FALLING WEIGHT DEFLECTOMETER

- Evaluates pavement and pavement layer stiffness



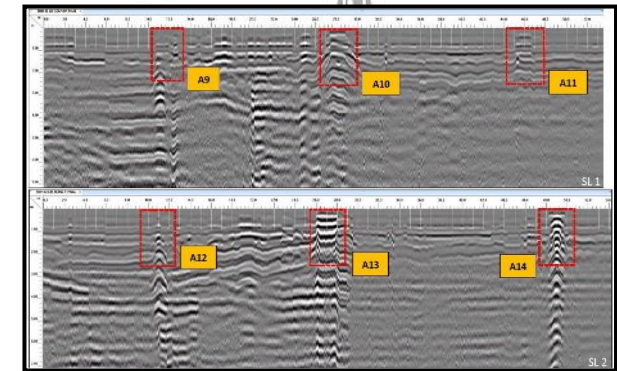
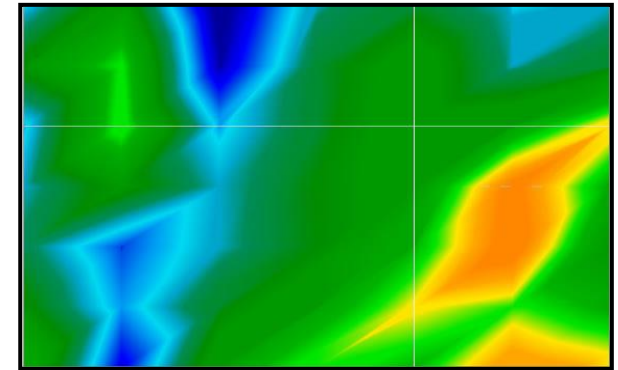
CONE PENETRATION TEST

- Determines the ground resistance through the penetration of a CPT cone into the ground at a constant rate. The test provides valuable data such as soil type, compaction, shear strength, and stratigraphy.



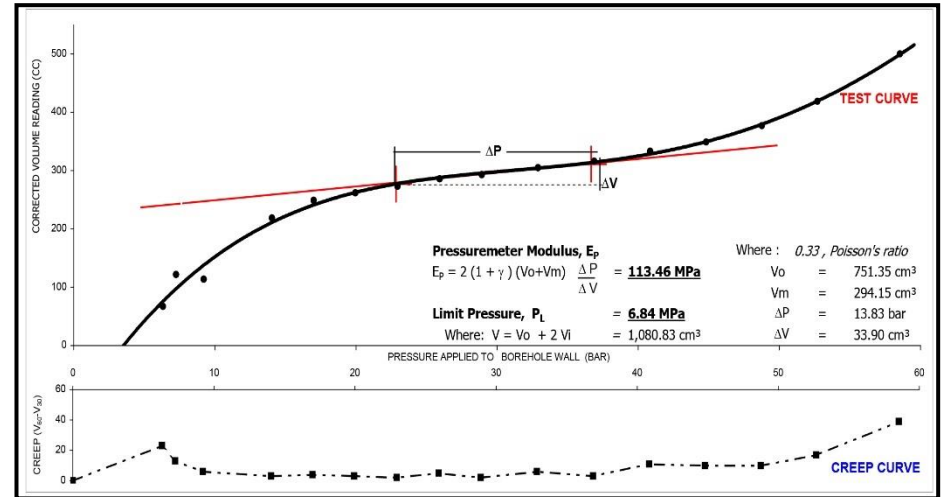
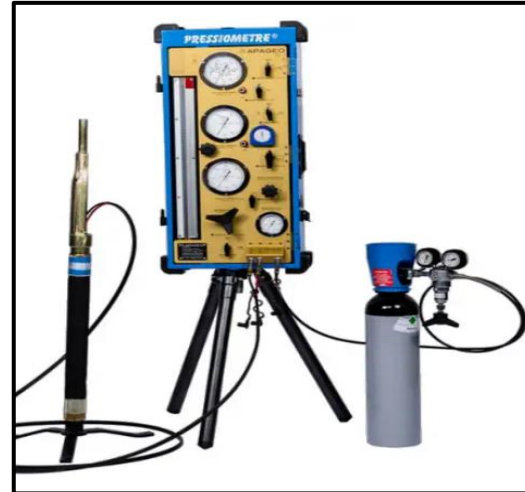
GROUND PENETRATING RADAR

- Locating method that uses radio waves capture images below the surfaces of the ground in a minimally invasive way



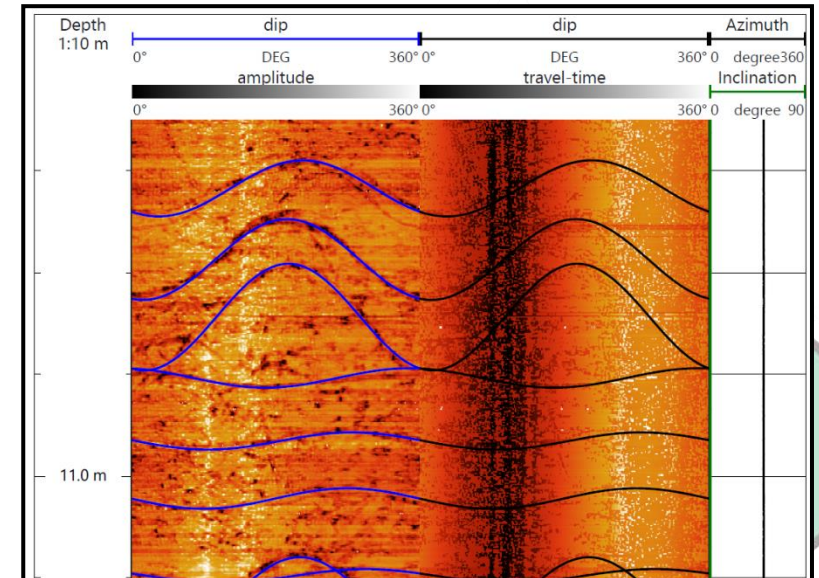
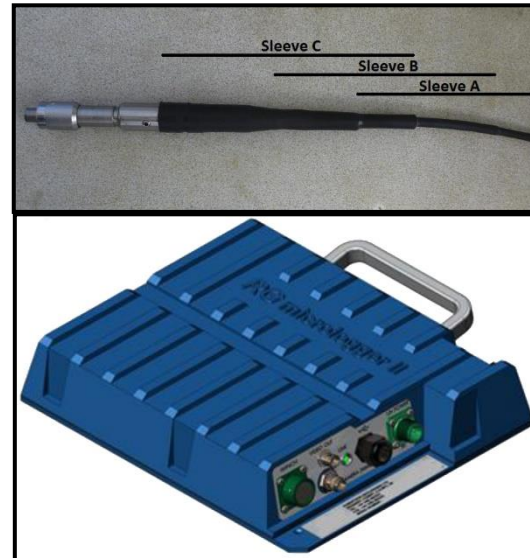
PRESSUREMETER TEST

- Determines the stress-strain behavior of soil or rock through the insertion of a the pressuremeter probe into the ground. Important parameters, such as soil/rock modulus, can be estimated from this test.



ACCOUSTIC TELEVIEWER

- Provides continuous logs of oriented unwrapped images of borehole walls.
- Further processing also allows for the computation and display of standard information on fractures and other geologic features



FIELD TEST

THERMAL RESISTIVITY TEST

- Measures the capacity of the ground to conduct or dissipate heat



PULL-OUT TEST

- Performed to assess the anchorage or pull-out capacity of piles



VANE SHEAR TEST

- Determines the undrained shear strength of soils especially soft clays

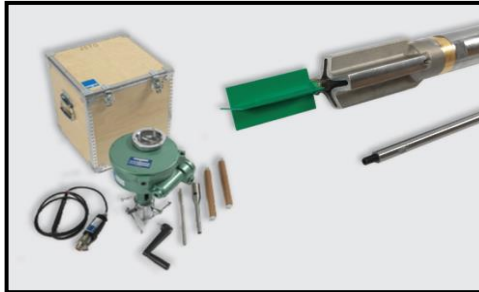


PLATE LOAD TEST

- Determines the settlement of the soil under a given load. Results can be used to estimate the ultimate bearing capacity



DYNAMIC CONE PENETRATION TEST

- Measures the material's in-situ resistance to penetration



FIELD DENSITY TEST (Sand Cone Method)

- Measures relative density of soil which has been compacted using compacting equipment



NUCLEAR DENSITY TEST (Nuclear Method)

- Rapid and non-destructive method for in-situ measurements of wet and water content of soil and soil aggregate and the determination of dry density



SPT ENERGY CALIBRATION

The SPT energy calibration involves the measurement of the energy transmitted by the hammer impact to the drill rods. Data is collected through the sensors attached to the SPT rods. The Pile Driving Analyzer (PDA)-PAX Model System enables the recording, processing, and display of data during hammer driving. This method can determine the efficiency of the SPT hammer driving system, and consequently normalize the SPT N-values measured in the field to N_{60} , which corresponds to the N-value at 60% hammer efficiency.



GROUND IMPROVEMENT

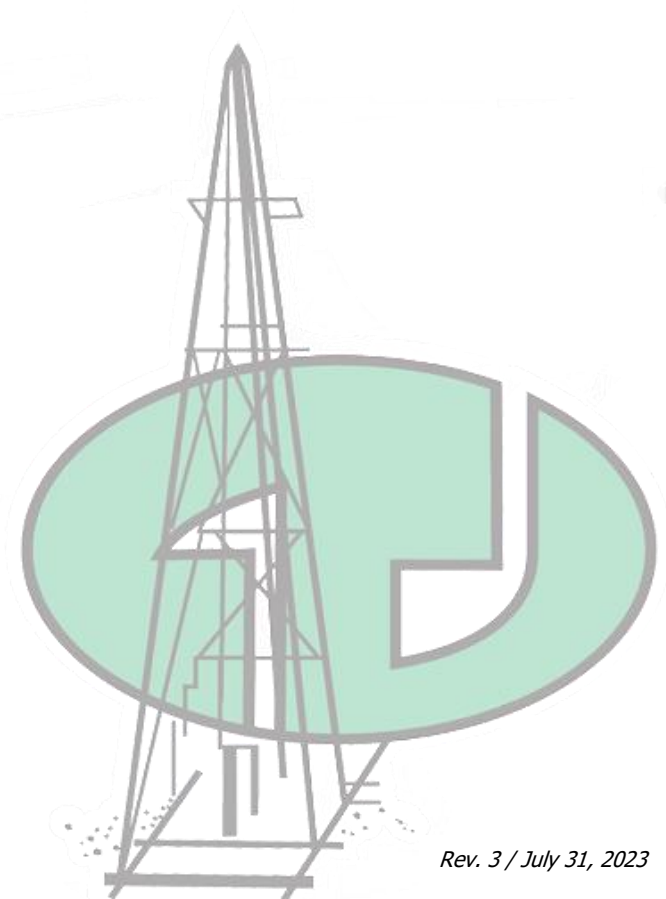
Soil Nailing / Grouting

- For soil stabilization, bearing capacity improvements, reducing and correcting settlement, and providing excavation support



GEOTECHNICAL SOFTWARE

- GEO4 Analysis of Geotechnical Structure (Bearing Capacity)
- GEO4 Analysis of Geotechnical Structure (Slope Stability)
- PDAPLOT for Pile Dynamic Test and Pile Integrity Test
- Seisopt@2D for Seismic Refraction Survey
- Seisopt REMI for Shear-wave Profile Using Refraction Microtremor
- Three-Dimensional Tomography Program (Cross hole Seismic Survey)
- Multichannel Analysis of Surface Waves - Geometrics, Inc. (Surface Wave, Seismic Survey)
- Rosy Design Version 11.2.25 (Falling Weight Deflectometer Test)
- Primax FWD Data Collection Version 3.0.25 SQL
- KD2 Pro Utility Software ver. 1.08 (Thermal Resistivity)
- PC Mon Utility Software for Cone Penetration Test
- Settle3D for Settlement Analysis, Liquefaction and CPT Analysis
- AllPile for Plie Analysis Software
- Liquefy Pro – Liquefaction Analysis Software
- LiqSVs – Liquefaction Analysis Software
- Slide2 – Slope Stability Analysis
- PRIMAX – Emodulus Backcalculation, PCN
- RS2 – 2D Finite Element Analysis
- RSDData – Laboratory Special Test Data Processing
- VTK Series Geotechnical & Environmental Data Acquisition System and Processing Softwar



PARTIAL LIST OF PROJECTS ENGAGED WITH

Similar Project for Grouting / Slope Stability Project

PROJECT NAME	LOCATION	CLIENT
Drilling & Grouting for San Gabriel Combine Cycle Power Plant	Sta. Rita, Batangas	STA. ELENA CONST. & DEV'T. CORP.
Proposed Slope Stabilization	Subic, Naval Base	I.C.C. / FILSYSTEM INC.
Proposed Slope Stabilization for CITI BANK Staff House	Baguio City	CITIBANK
Drilling & Grouting Works for UCPB Project	Salcedo Village, Makati City	FILSYSTEM INC.
Drilling, Grouting Works & Geophysical Survey	Masinloc, Zambales	MITSUBISHI CORPORATION
Drilling & Grouting works for Land Bank of the Phils.	La Trinidad, Benguet	LAND BANK OF THE PHILS.
Soil Improvement by Cement Grouting at Koyo-Seiko Plant	Lima-Malvar, Batangas	TAISEI PHIL. CONST., INC.
Cement Injection for Iglesia Ni Kristo	San Fernando, Pampanga	A. CRUZ CONSTRUCTION
Cement Injection Works for Prop. Reservoir 2	Lucban, Quezon	J.H. PATAWARAN CONST. COMPANY
Drilling & Grouting Works for Prop. Imperial Palace	Maribago, Lapu-Lapu City	PHILIPPINE BXT CORPORATION
Drilling & Grouting Works for Pantal Bridge	Dagupan City	A. AQUINO BUILDERS
Soil Nailing in Shangri-La Boracay	Aklan	D.M. CONSUNJI, INC.
Drilling & Grouting Works for SLEX Rehabilitation & Widening Project	Alabang-Calamba Section	F.F. CRUZ & CO., INC.
Pressurized Grouting Works for CALAX Project	Silang, Cavite	LEVEL UP CONST. & SUPPLY, INC.
Proposed 3-Storey Classroom	Calumpit	COMPACT BUILDERS
Micropile Foundation for the settlement at Pier 247 SB of the Candaba Viaduct	Candaba, Pampanga	FREY-FIL / NLEX CORPORATION
Permeation Grouting for 120TPH Fed Mill Plant	Mabini, Batangas	SAN MIGUEL PUREFOODS CO.
Permeation Grouting for Smart Project	Puerto Princesa, Palawan	SMART COMMUNICATION INC.
Jet Grouting Works for SNPW New Factory Phase-1	Binalonan, Pangasinan	TAISEI PHILIPPINE CONST., INC.
Cement Grout Injection Works for Robinsons Mall	Tagum City, Davao	ROBINSONS LAND CORP.
Permeation Grouting for Proposed Bulk Warehouse Project	Sta. Cruz, Davao Del Sur	SAN MIGUEL FOOD, INC.

Similar Project for Geotechnical Works

ROAD AND BRIDGES

PROJECT NAME	LOCATION	CLIENT
Onshore G. I. Works for Proposed Bataan - Cavite Interlink Bridge	Bataan - Cavite	CEBULINK JV
G. I. for Detailed Eng'g Design of Laguna - Lakeshore Road Network Project	Lower Bicutan - Laguna	CTI ENG'G INTERNATIONAL CO., LTD.
G. I. Works for the Detailed Design of Cebu - Mactan (4th Bridge) and Coastal Road Construction Project	Cebu - Mactan	ORIENTAL CONSULTANTS CO., LTD
S. I. Works for IPIF1 Road and Bridges for Samal Island - Davao City connector Bridge	Samal Island - Davao	OVE ARUP & PARTNERS HK LTD.
G. I. Works for Proposed Skyway Stage 3 Project	Metro Manila	E EI CORPORATION
S. I. for Daang Hari SLEX Link Road	Susana Hts. Toll Plaza	PHILIPPS TECHNICAL CONSULTANTS, CORP.
G. I. Works for OB3 Cavite - Laguna Expressway (CALAX) Cavite Segment	Cavite	LEIGHTON CONTRACTOR ASIA LTD
G. I. Works for Prop. New Manila International Airport Expressway	Bulacan	SAN MIGUEL CORPORATION
G. I. Works for Proposed Manggahan Bridge	Pasig City	M. G. LUALHATI CONSTRUCTION
G. I. Works for Proposed Bocong Bridge	Ilocos Norte	PHILIPPINE COAST GUARD & PIPELINE CORP.
S. I. Works for Boton Highway	Subic Bay, Zambales	CDCP
G. I. Works for San Juanico Bridge	Samar-Leyte	

RAILWAYS

S. I. Works for Philippine National Railways South Long Haul - Package 1	Laguna - Bicol	CHINA RAILWAY DESIGN CORP.
G. I. for Prop. North - South Commuter Railway Project (NSCR)	Malolos, Bulacan - Tutuban, Manila	JICA/KEI/OCG/KATAHIRA & ENGINEERS JV
G. I. for Mindanao Railway Project (Davao-Tagum Segment)	Davao - Tagum	OVE ARUP & PARTNERS HK LTD.
G. I. for LRT-1 Cavite Extension	Baclaran, Parañaque-Bacoor, Cavite	BOUYGUES TRAVAUZ PUBLICS PHILIPPINES, INC.
S. I. for MRT-7 Project	Quezon City - Bulacan	E EI CORPORATION

AIRPORTS / HANGAR

G. I. Works for Palau International Airport	Malakal, Palau	KJI ASSOCIATES
G. I. for Prop. Manila International Airport	Pasay	MIA
G. I. for Prop. Davao International Airport	Davao	PACIFIC CONSULTANTS INTERNATIONAL
G. I. for New Iloilo Airport Dev't. Proj.	Iloilo City	TAISEI-SHIMIZU JV
G. I. for Subic Bay International Airport	Angeles, Pampanga	F.F. CRUZ CO., INC.
G. I. Works for Cagayan De Oro Airport Terminal Bldg.	Cagayan De Oro	SAUTI INTERNATIONAL
G. I. for Proposed Hangar	Pasay City	BF METAL CORP. / CB
S. I. for Lufthansa Technik Phils. Aircraft Overhaul Facility	Villamor Airbase, Pasay City	LUFTHANSA TECHNIK PHILS.
G. I. for Proposed Wide Body Aircraft Hangar	NAIA, Pasay City	

POWER PLANT / WIND FARM

PROJECT NAME	LOCATION	CLIENT
G. I. for San Gabriel Avion Power Plant Proj.	Sta. Rita, Batangas	PRIME MERIDIAN POWER CORP.
G. I. for 2X300MW Coal Fired Power Plant	Mariveles, Bataan	CHINA CONST. & ELECTRICAL EQUIPMENT PHIL. CORP.
G. I. for 120MW Sual Power Plant	Sual, Pangasinan	NEW SAMPAGUITA BUILDERS CONST., INC.
G. I. for Prop. BACMAN 3 Geothermal Power Plant (BGBU)	Bacon, Manito, Sorsogon	ENERGY DEV'T CORP.
G. I. Cebu CFB 103 Coal Fired Power Plant	Naga	DOOSAN HEAVY INDUSTRIES & CONST., CO., LTD.
G. I. for Kalayaan Power III Plant	Kalayaan	R.C. TOLLO SURVEYING SERVICES
G. I. for Proposed DMCI Power Plant A	Mobo, Masbate	D.M. CONSUNJI, INC.
S. I. for Proposed Power Plant Project	Clark Field, Pampanga	POLAR ENERGY, INC. / MR. FELIPE F. CRUZ
S. I. for Proposed Mirant Toledo-Sangi Power Station	Toledo, Cebu	BLACK & VEATCH CORP.
G. I. for Mindanao 20MW Coal Fired Power Plant	Tagoloan, Misamis Oriental	JFE CIVIL ENG'G & CONST., CORP.
G. I. for 300MW Combined Power Cycle	Limay, Bataan	TOYO CONST. CO., LTD.
Prop. Bago River A & B Miniydro	Bago, Negros Occidental	DCCD ENG'G CORP.
Prop. Agua Grande Mini Hydro	Pagudpud, Ilocos Norte	
G. I. for UPC Wind Farm	Ilocos	PHILIPPS TECHNICAL CONSULTANTS CORP.
G. I. for Caparispisan 80MW Wind Farm	Caparispisan & Balaoi	

PIER / PORTS

G. I. for Prop. Coal Yard, Ash Yard and Assistant Bldg. Area	Mariveles, Bataan	CHINA CONST. & ELECTRICAL EQUIPMENT PHIL. CORP.
G. I. for Prop. Marine Petroleum Offloading Facility	Walvis Bay Harbor	BURMEISTER & PARTNERES (PTY) LTD.
G. I. for Manila South Harbor	ATI, Pier 3, Port of Manila	ASIAN TERMINAL, INC / HALCROW GROUP LTD.
S. I. for Manila Yacht Club Expansion & Dev't Proj.	Roxas Blvd., Manila	PKII ENGINEERS
Bataan Jetty Rehabilitation Proj.	Mariveles, Bataan	PHILIPP'S TECHNICAL CONSULTANTS, INC.
Offshore Drilling for the New RGC Plants Jetty & Berthing Facilities	Navotas, Metro Manila	REPUBLIC-ASAHI GLASS CORP.
S. I. for Batangas Port Dev't Project, Phase-I	Batangas	HANJIN ENG'G & CONST., CO. LTD.
S. I. for Puerto Azul Port & Marina Project	Ternate, Cavite	PUERTO AZUL LAND, INC.
S. I. for the Construction of RC Pier	Port of Jolo, Sulu	PHILIPPINE PORTS AUTHORITY
Bicol Basin Flood Control & Irrigation Dev't. Proj.	Naga, Bicol	SIR WILLIAM HALCROW LTD., INC.
G. I. Works for Tangnan Pier	Bohol	FREY-FIL CORPORATION

INFRASTRUCTURE

PROJECT NAME	LOCATION	CLIENT
G. I. for Proposed New Panglao Municipal Hall	Bohol Province	FREY-FIL CORP.
G. I. for the Ivywall Hotel	Panglao Island, Bohol	DATA LAND, INC.
G. I. for Prop. Manila Hotel	Intramuros, Manila	F.F. CRUZ CO., INC.
S. I. for the Prop. Boracay Terraces Hotel	Malay, Aklan	VAN CEAM HOTEL, INC.
S. I. for the Prop. Hennan Hotel	Boracay Island	BORACAY REGENCY BEACH RESORT, INC.
G. I. for Insular Hotel	Cebu City	AYALA CORP.
G. I. for Royal Palm Hotel	Ermita, Manila	ROYAL PALM HOTEL/ MR. FRANCISCO MACASIEB
G. I. Works for Prop. Marco Polo Residences Tower 5	Mactan Island, Cebu	FILINVEST DEV'T. CORP.
G. I. for Seaview Condo & Seascape Resort Town	Cebu City	FEDERAL LAND
G. I. for Proposed Grand Hyatt Residences 2	Bonifacio, Global City	
G. I. for ABS-CBN Ilog Kapamilya Foundation - School Rebuilding Phase-4	Tacloban City, Leyte	ENERGY DEV'T CORP.
G. I. for Prop. Cebu Doctors Hospital	Cebu City	
S. I. for Prop. Saint Paul Hospital Extension	Cavite	SAINT PAUL HOSPITAL
G. I. for Prop. Cancer Center Bldg.	Muntinlupa City	ASIAN HOSPITAL & MEDICAL CENTER
G. I. for Tagaytay Resort Center	Tagaytay City	FEREIT REALTY CORP.
G. I. for Taal Vista Lodge	Tagaytay City	RESORT HOTEL CORP
G. I. for Prop. Amanpulo Phase II	Pamalican Island, Cuyo, Palawan	SEVEN SEAS RESORT & LEISURE, INC.
Geotechnical Study for Luzville Dev't. Corp.	San Jose, Nueva Ecija	GEO-PRIME INC.
G. I. for Camella Ellisande	Taguig City	CAMELLA PROPERTIES HOLDINGS
S. I. Works for Prop. Subdivision	Teresa, Rizal	FILINVEST LAND, INC.
S. I. Works for Fairmount Subdivision Phase-IV	Antipolo City	MARTINEZ LEYBA, INC.
S. I. for Lumina Housing Project	Dumaguete City	VISTA LAND HOLDINGS
G. I. Works for SM MOA Complex	Pasay City	SM INVESTMENTS CORP.
G. I. for the Prop. Mall	Limketkai Center, Cagayan De Oro	LIMKETKAI & SONS INC.
S. I. for Prop. St. Elena Mall	Tondo, Manila	YEELOOFA DEV'T. CORP. / ABCEDE & ASSOCIATES
G. I. for SM Megamall Prop. Basement Parking	EDSA, Mandaluyong	FIST ASIA REALTY DEV'T
G. I. for Prop. Aglipay Municipal High School	Aglipay, Quirino	F. F. CRUZ CO., INC.
G. I. for Camarines Sur National High School	Naga, Camarines Sur	DMJM EAST FAR EAST, INC.
G. I. for Prop. British School - Manila	Fort Bonifacio, Makati	THE BRITISH SCHOOL, INC.
G. I. for Ateneo Graduate & Law School Bldg.	Salcedo St., Makati City	ATENEO DE MANILA UNIVERSITY
G. I. for UP School of Economics Bldg.	UP Diliman, Quezon City	UP SCHOOL OF ECONOMICS

Similar Project for Pile Testing Works

PROJECT NAME	LOCATION	CLIENT
Pile Dynamic Analysis, Pile Integrity Test & Cross-Hole Logging Test for MRT-7 Stations	North Ave. - San Jose Del Monte, Bulacan	TREVI FOUNDATIONS, INC.
Pile Dynamic Analysis, Pile Integrity Test & Cross-Hole Logging Test for LRT-1 Cavite Extension	Parañaque City - Las Piñas	BOUYGUES TRAVAUX PUBLICS PHILS., INC.
Pile Dynamic Analysis, Pile Integrity Test & Cross-Hole Logging Test for North South Commuter Railway Project, Package CP: Elevated Structures & 3 Stations	Balagtas - Malolos, Bulacan	SUMITOMO MITSUI CONST. CO. LTD.
Pile Dynamic Analysis, Pile Integrity Test & Cross-Hole Logging Test for Malolos - Clark Railway Project CP N02	Sto. Tomas - Mexico, Pampanga	ACCIONA-DEALIM JV
Pile Dynamic Analysis, Pile Integrity Test & Cross-Hole Logging Test for Cebu Integrated Resorts	Cebu City	TERRACON EARTHWORKS PHILS., INC.
Pile Dynamic Analysis, Pile Integrity Test & Cross-Hole Logging Test for PMI Tower Project	San Antonio, Makati City	PREMIUM MEGASTRUCTURES, INC.
Pile Dynamic Analysis, Pile Integrity Test & Cross-Hole Logging Test for New Immigration Bldg.	Pasay City	R. U. AQUINO CONSTRUCTION
Pile Dynamic Analysis, Pile Integrity Test & Cross-Hole Logging Test for Widening of Sailway Bridge	General Santos City	HITONE CONST. & DEV'T. CORP.
Pile Dynamic Analysis & Pile Integrity Test for Molino Fly over	Bacoor, Cavite	R.A. PAHATI CONST. & SUPPLY, INC.
Pile Dynamic Analysis & Pile Integrity Test for Bamban Bridge	Bamban, Tarlac	R.A. PAHATI CONST. & SUPPLY, INC.
Pile Dynamic Analysis & Pile Integrity Test for Abusag Bridge	Baggao, Cagayan Valley	FREY-FIL CORP.
Pile Dynamic Analysis & Pile Integrity Test for Cebu-Cordova Link Expressway - Package 3	Cebu	PACIFIC CONCRETE PRODUCTS, INC.
Pile Dynamic Analysis & Pile Integrity Test for HOKKA-1 Tower	Binondo, Manila	GRANT EXPLOIT BUILDER DEV'T. CORP.
Pile Dynamic Analysis & Pile Integrity Test for Damosa IT Bldg.	Lanang, Davao City	CARWILL CONST., INC.
Pile Dynamic Analysis & Pile Integrity Test for STI Academic Center	Legazpi, Albay	MONOCRETE CONST. PHILS., INC.
Pile Dynamic Analysis & Pile Integrity Test for GN Power Project	Mariveles, Bataan	YOU PIN CONST. (PHIL), INC.
Pile Dynamic Analysis & Pile Integrity Test for City View Garden	Pasay City	TERRACON EARTHWORKS PHILS., INC.
Pile Integrity Test for ATI Manila South Harbour CN E & F	Manila South Harbour	FIRST BALFOUR, INC.
Pile Dynamic Analysis, Pile Integrity Test, Lateral & Static Load Test for Pasudeco Tower	Capital Town, San Fernando, Pampanga	MEGAWORLD CORP.
Lateral Load Test for Azuela Seawall Project	Lanang, Davao City	MAKATI DEV'T. CORP.
Static Load Test for JG Summit Project	Simlong, Batangas	YOU PIN CONST. (PHIL), INC.

SPECIAL TEST

Similar Project for Geophysical Survey

PROJECT NAME	LOCATION	CLIENT
Seismic Survey for Nuclear Plant	Bagak, Morong, Bataan	ENGINEERING GEOSCIENCE, INC.
Seismic Refraction & Microtremor for Petron Project	Bataan	DAELIM INDUSTRIAL CO. LTD.
Geophysical Survey for Boracay Resort	Manok-manok, Boracay	VINNEL BERVOIR CORP.
Geophysical Survey for Prop. Korean Embassy		GEORGE PADILLA & ASSOCIATES
Seismic Refraction Survey for Iglesia Ni Cristo Chapel	Brgy. Bagong Silang, Isabela	IGLESIA NI CRISTO
Seismic Refraction Survey & Multi Analysis Surface Wave (MASW) for Nestle Property	Alabang, Muntinlupa City	MDC BUILD PLUS, INC.
Seismic Survey for Proposed Biomass / Coal Fired Power Plant		FDC UTILITIES, INC. / MS. HAZEL ALVAREZ
Seismic Survey & GPR Scanning for Tateh Premium Polomolok Plant	Polomolok, South Cotabato	SANTEH FEEDS CORP.
Dynamic Shear Wave Test for APC Cement Mill & Conveyor	Naga City	TCGI ENGINEERS
Ground Penetrating Radar, Seismic & Georesistivity Profiling for the Prop. Starmall	Mactan City, Cebu	MASTER PIECE ASIA PROPERTIES, INC.
Ground Penetrating Radar, Seismic Survey for Prop. 18th Storey Belmont Hotel with Basement	Mactan Newton, Cebu	MEGAWORLD CORP.
Offshore Seismic Survey for Proposed NAC-NIHAO Loading Wharf and Causeway	Dinapigue, Isabela	GEOGEN CORP.
Seismic Refraction Survey for Prop. Wind Turbine Generator (WTG) Foundation	Puerto Princesa, Palawan	
Downhole Seismic Testing for Prop. Laguna Lake Water Treatment Plant (LLWTP)	Brgy. Poblacion, Muntinlupa	OVE ARUP & PARTNERS HK LTD
Downhole Seismic Wave for Construction of New Satellite Depot at Zapote	Baclaran and Alabang	SHIMIZU CORP.
Electrical Resistivity & Seismic Refraction Survey for Playan Binary Power Plant	Albay & Sorsogon	FIRST BALFOUR, INC.
Pressuremeter, Cone Penetration Test & Seismic Survey for the Detailed Design of Cebu-Mactan (4th Bridge) and Coastal Road Construction Proj.	Cebu - Mactan	ORIENTAL CONSULTANTS CO., LTD.
Pressuremeter Test & Vane Shear Test for 40 MEDC Solar Power Plant	Pangasinan	SCATEC
Pressuremeter Test, Lugeon Test, Seismic & MASW for Eastbay 50MLD Water Treatment Plant	Pakil, Laguna	FIRST BALFOUR, INC.
Multi Analysis Surface (MASW) for Combine Cycle Power Plant (CCPP) Project	Ilijan, Batangas	STA. CLARA INTERNATIONAL

Falling Weight Deflectometer (FWD)

PROJECT NAME	LOCATION	CLIENT
Falling Weight Deflectometer (FWD)		
FWD for Cemex Manila Terminal	Tondo, Manila	SOLID CEMENT CORP.
FWD for PGCSI MOF	Tabango, Batangas	AMH PHILIPPINES, INC.
FWD for Batangas Port Expansion Proj.	Batangas	AG & P
FWD for Caticlan Airport	Caticlan, Aklan	SAN MIGUEL CORP.

Cone Penetration Test (CPT) & PS LOGGING

CPT & PS LOGGING for Detailed Eng'g Design for Laguna Lakeshore Road Network Project	Lower Bicutan - Laguna	CTI ENGINEERING
CPT & PS LOGGING for Detailed Design of Cebu - Mactan (4th Bridge) & Construction of Coastal Road Project	Cebu - Mactan	ORIENTAL CONSULTANT CO. LTD. ACCIONA CONSTRUCTION S.A. / DEALIM JV
CPT for Malolos - Clark Railway (MCRP-02)	Pampanga	T.Y. LIN I PYUNGHWA ENGINEERING CONSULTANT JV
CPT & PS LOGGING for Prop. Bataan - Cavite Interlink Bridge Proj.	Bataan - Cavite	FIRST AGUA
CPT for East Bay 50MLD WTP Project	Pakil, Laguna	CEBU LINK JV
CPT for Cebu Cordova Link Expressway Project	Cebu - Cordova	PHILEX MINING CORP.
Piezocone Penetration Testing for Philex Mining	Baguio City	
CPTu for US Embassy	US Embassy, Manila	

FIELD TEST

Thermal Resistivity

Thermal resistivity Survey for Veritas Property	Palayuig, Zambales	GEORGE B. PADILLA & ASSOCIATES
Thermal resistivity Survey for 75MW Solar Power Plant	Baras, Rizal	
Thermal resistivity Survey for Arayat Solar Power Plant	Arayat & Mexico, Pampanga	BVI PHILIPPINES, INC.

Pull-Out Test

Pull-Out Test for Cayanga - Bugallon Solar Power Plant	Pangasinan	JGC PHILIPPINES, INC.
Pull-Out Test for Mandaue Harbor City Reclamation Project	Cebu	IBC SOLAR ENERGY PTY. LTD.

Vane Shear Test

Vane Shear Test for Cemex K4 Project	Antipolo City	CBMI CONSTRUCTION CO. LTD.
Vane Shear Test for Manila South Harbor	Pier 3, Manila	ASIAN TERMINAL, INC.
Vane Shear Test for Zapote Satellite Depot	Las Piñas	SHIMIZU PHILIPPINES CONTRACTOR INC.

Plate Load Test

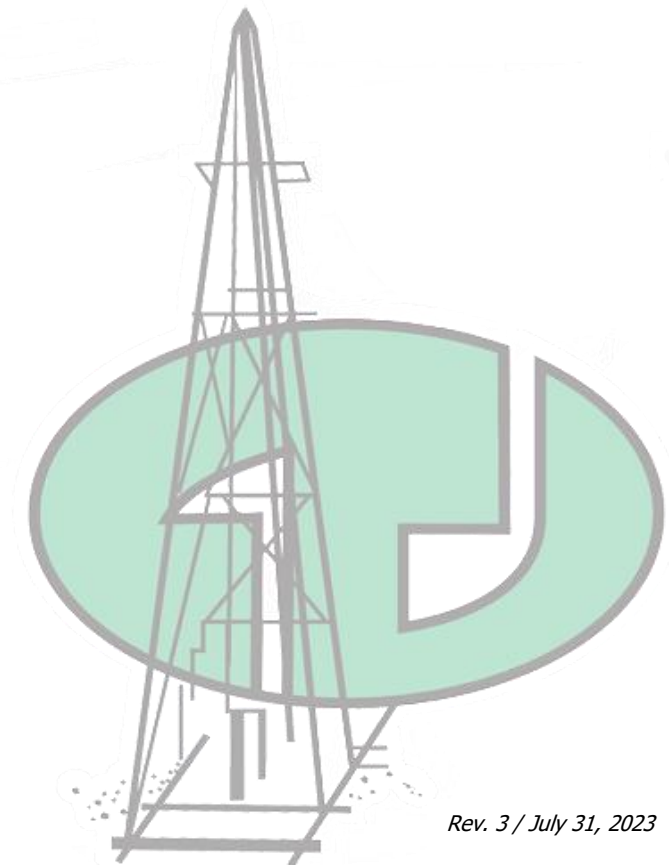
Plate Load Test for Toyota Motor Phils., Inc	Sta. Rosa, Laguna	TAISEI PHILIPPINE CONSTRUCTION, INC.
Plate Load Test for Burgos Windfarm	Burgos, Ilocos Norte	FIRST BALFOUR, INC.
Plate Load Test for MRT-7 Elevated Guideway Project	Quezon City	E EI CORPORATION
Plate Load Test for Metro Manila Subway Project (MMSP) Depot - PRI Bldg.	Brgy. Ugong, Valenuela City	SHIMIZU PHILIPPINE CONTRACTOR, INC.

Dynamic Cone Penetration Test (DCP)

Dynamic Cone Penetration Test for Water Treatment Plant	Putatan, Muntinlupa, City	D.M. CONSUNJI, INC.
Dynamic Cone Penetration Test for Clark Green Frontier	Clark, Pampanga	SIRUS REALTY SERVICES, INC.
Dynamic Cone Penetration Test for Toyota Motor Philippines	Sta. Rosa, Laguna	TAISEI PHILNE CONTRACTOR, INC.
Dynamic Cone Penetration Test for Nippon Premium Bakery	Sto. Tomas, Batangas	
Dynamic Cone Penetration Test for JG Summit PPX and PPX Expansion Project	Simlong, Batangas	JGC PHILIPPINES, INC

Field Density Test

FDT for the Prop. Dam	Binangonan, Rizal	ANTIPOLO PROPERTIES
FDT for Caltex Batangas	Batangas	MR. ARIEL NEPOMUCENA/ PRINCE ERIC CONSTRUCTION
FDT for Manila Bulletin	Manila	TAISEI PHILIPPINE CONST., INC.
FDT for Road Network	Calaca, Batangas	MCC CORPORATION PHILS.
FDT for Globe Tower	San Antonio, Zambales	ALLAN DICK & COMPANY



GPI's Quality Control System is established to maintain a system that complies with the requirements of the standard quality system and ISO/IEC 17025.



Quality Control System

Geotechnics Philippines Inc. commits to provide a safe and healthful place of work throughout all of GPI Facilities and work sites and to make every effort towards eliminating or minimizing any environmentally adverse effects of GPI's operation.



Safety Management

GPI Research and Development department was established to analyze and create a sound understanding of current conditions on the developing trends in the geotechnical field, in order to maintain the company's competitiveness. It is found to satisfy the company's goal and objectives:

- To explore for advancement and development in the geotechnical field to provide quality and efficient
- Represents the activities GPI undertake to innovate and introduce new services or to improve the existing services offered
- Succor GPI to stay ahead in its field of expertise by catering the new wants or needs of the client

- Establish methods and procedures with the prevention of the risks in conducting the operations

Research and Development

